

Forenta

Morristown, TN U.S.A.

Collar-Cuff-Yoke Presses

MAGNA Model 392VCHD

BRAVO Model 392VCHY

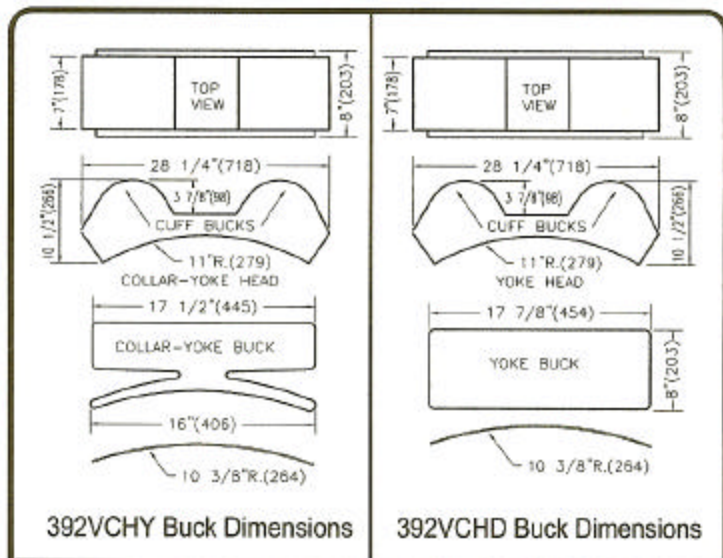


- Two Button Activation – Easy to Operate
- Cuff Heads and Bucks Designed with Sharper Radius to Finish Wider Range of Shirt Sizes
- Pneumatic/Electric Operating System for Operating Efficiency
- Designed to be Used with Forenta's Single Buck, Double Buck, Rotary Double Buck to Obtain Maximum Production
- The Stacked Head Design Increases Production Rate 30% to 40%

Specifications

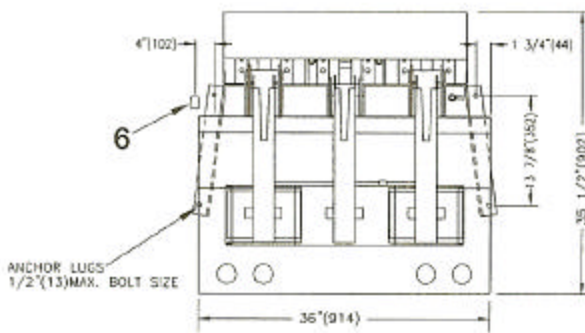
Models 392VCHY / VCHD

Electrical connections		392VCHY VCHD
Voltage	120V 1PH 50/60Hz .5amps	Standard
Voltage	230V 1PH 50/60Hz .25amps	optional
Steam and Air connection		
Steam Inlet	NPT	1/2"
Steam Outlet	NPT	1/2"
Rec. steam pressure	PSIG	100-125
	kPa	621-861
Steam consumption	BHP	1.5
	kg/hr	23.4
Compressed air	NPT	3/8"
Air consumption	free air/cycle	0.54 CUFT.
	free air/cycle	15.3 liters
Rec. air pressure	PSIG	68
	kPa	470
Water connection	NPT	1/4"
Weight (crated)		
Shipping	lbs	800
	kg	363
1 Control Push Buttons	4 Steam Outlet connection	
2 Steam connection	5 Electrical Connection	
3 Air connection	6 Water Connection (for water spray only)	

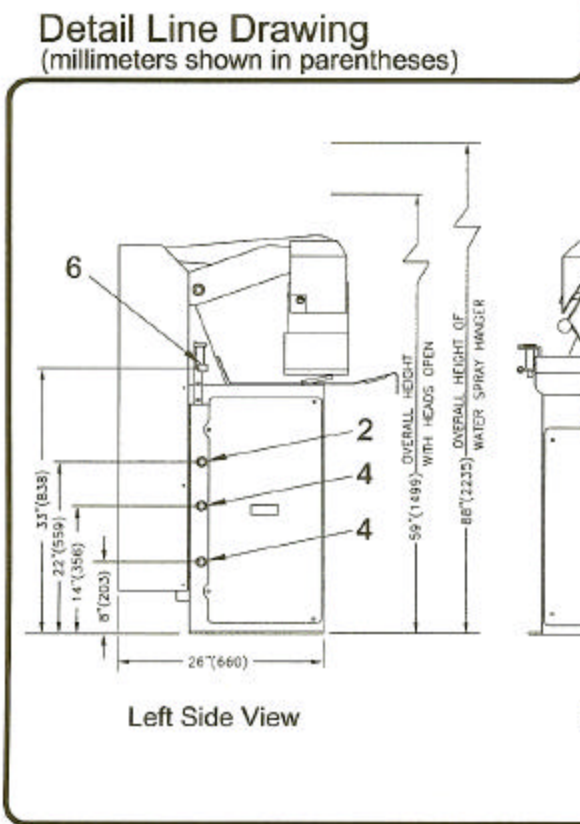


392VCHY Buck Dimensions

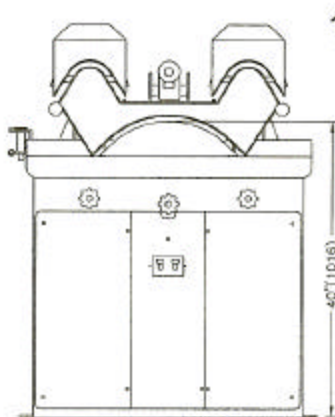
392VCHD Buck Dimensions



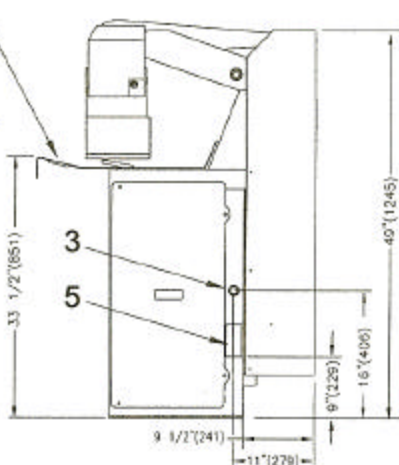
Top View



Left Side View



Front View



Right Side View